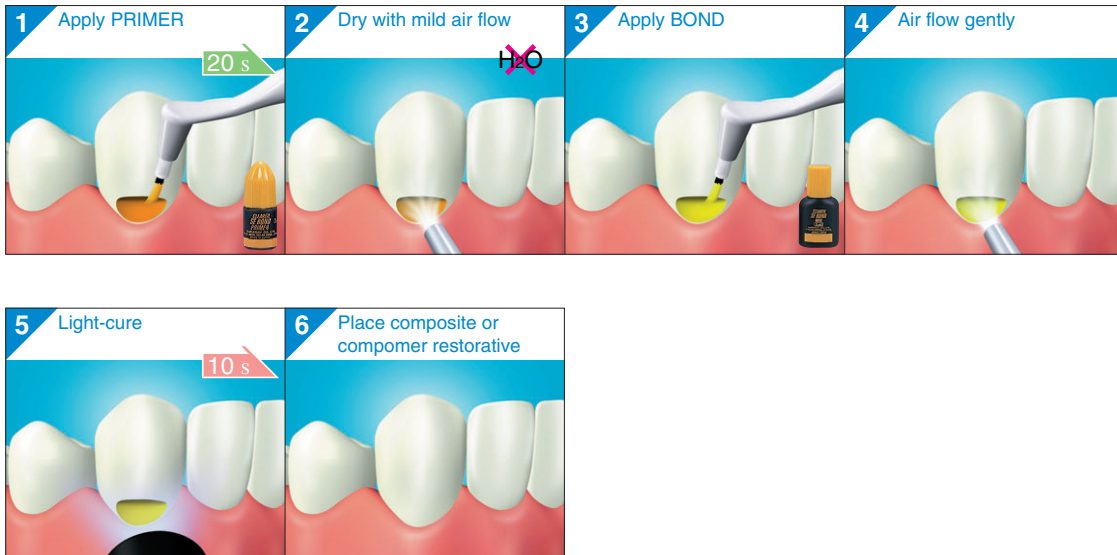
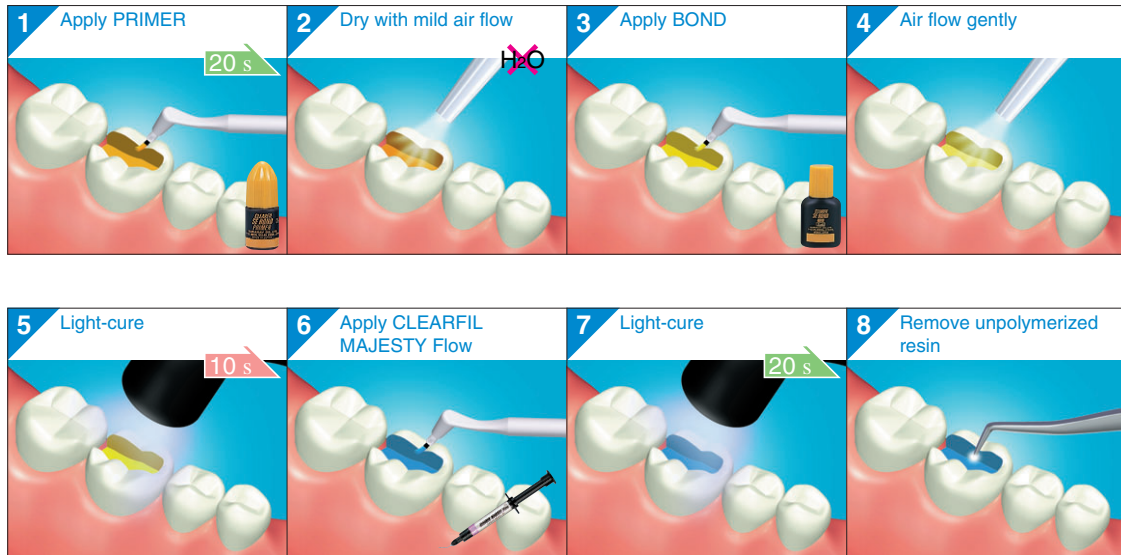


Case A Direct filling restorations using light-curing composite or compomer**A**

S1970EU-03

Case B Cavity sealing as a pretreatment for indirect restorationsKURARAY MEDICAL INC.
1621 Sakazu, Kurashiki,
Okayama 710-0801, Japan**B**

Case C Treatment of hypersensitive and/or exposed root surfaces

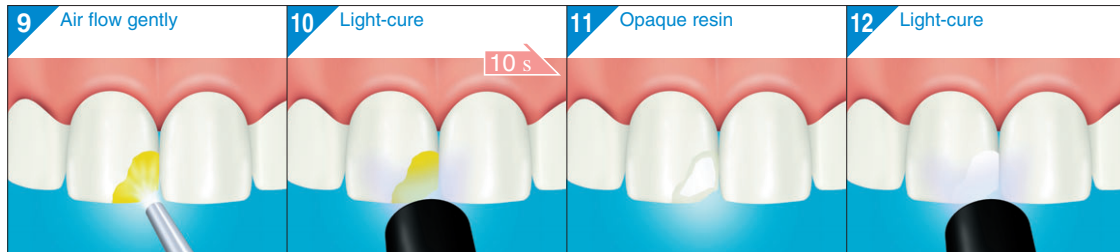
C

Case D Intraoral repairs of fractured facing crowns made of porcelain, hybrid ceramics or composite resin using light-curing composite (1/2)KURARAY MEDICAL INC.
1621 Sakazu, Kurashiki,
Okayama 710-0801, Japan

Case D Intraoral repairs of fractured facing crowns made of porcelain, hybrid ceramics or composite resin using light-curing composite (2/2)

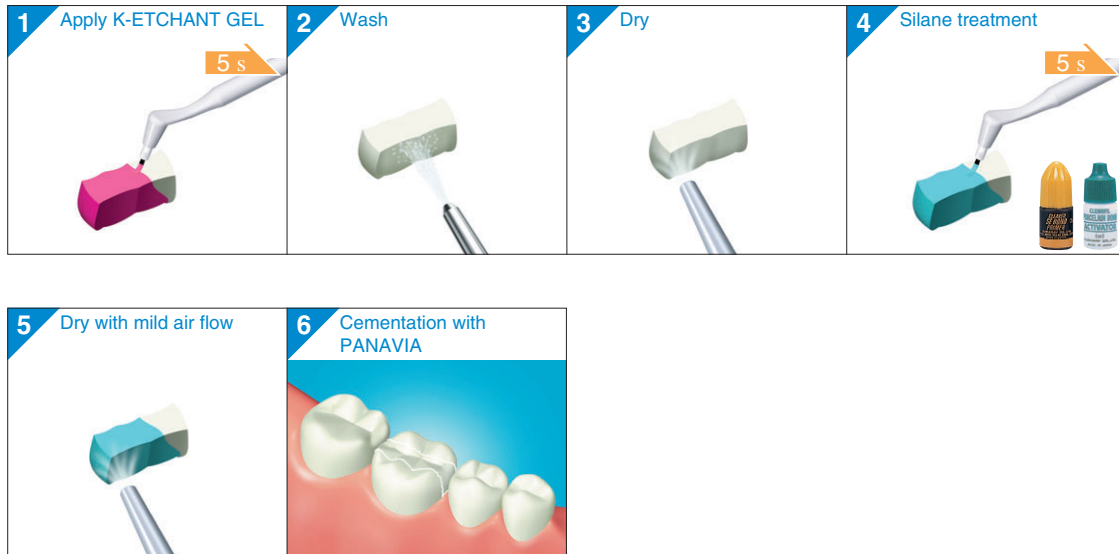


KURARAY MEDICAL INC.
1621 Sakazu, Kurashiki,
Okayama 710-0801, Japan



Case E Surface treatment of prosthetic appliances made of porcelain,
hybrid ceramics and cured composite resin

KURARAY MEDICAL INC.
1621 Sakazu, Kurashiki,
Okayama 710-0801, Japan

**E**